

Subversion and Tortoise



March 2007

Steps - synopsis

1. Download and install Tortoise (svn client)
2. Create the copy of the local test-repository
3. Add, commit and others operations
4. Authentication with your own repository

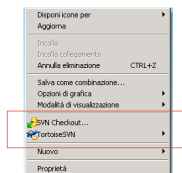


1. Getting Tortoise

SVN client, you can find it at <http://tortoisesvn.net/downloads>

Install it and restart the o.s.

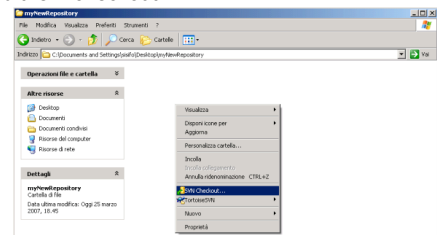
After that, clicking on the right button of the mouse you should see new options in the Windows menu:



2. Getting the test-repository

2.1 Create a new folder

2.2 Inside the new empty folder, click right button of the mouse, and then "checkout"



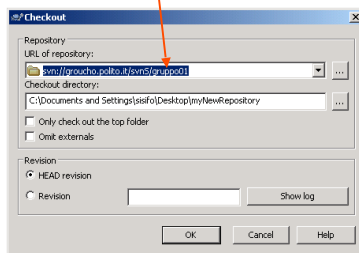
2. Getting the test-repository

2.3 Insert URL of remote repository:

http://softeng.polito.it/repo/didattica/CORSO INGEGNERIA DEL SOFTWARE/test_project/

Username: `softw_eng`

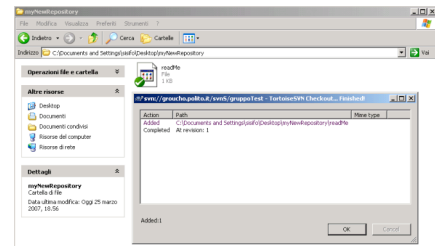
Password: `softw_eng`



SoftEng

2. Getting the test-repository

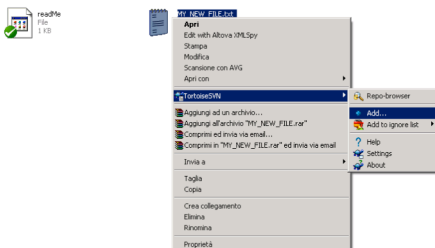
2.4 Now you should have a local copy of files in the test-repository



SoftEng

3. Add, commit and more

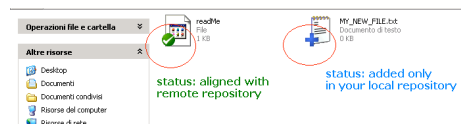
3.1 Create a new file, than add it on the repository clicking on right button of the mouse



SoftEng

3. Add, commit and more

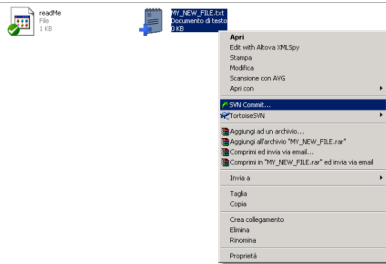
3.2 Now your file is added only on your local repository.



SoftEng

3. Add, commit and more

3.3 In order to add it on the server, click right and then SVN Commit...



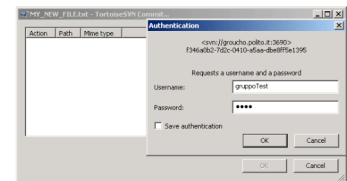
SoftEng

3. Add, commit and more

3.4 To write on the server, you must authenticate yourself. For the test-repository,

Username: **softw_eng**

Password: **softw_eng**



SoftEng

3. Add, commit and more

3.5 Now local and remote repositories are aligned.



3.6 You can modify your local copy, but remember to commit again!



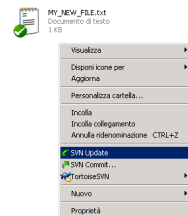
a change occurred: remember that now the remote copy is no longer aligned with the file on the server

SoftEng

3. Add, commit and more

3.7 What else ?

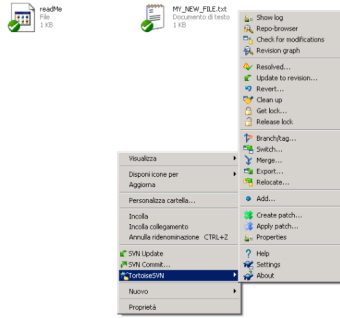
Update: to check if changes occurred on the server and download the new versions



SoftEng

3. Add, commit and more

3.8 What else ? A lot of useful functionalities !



SoftEng